

PART OF THE NW.1/4, OF SEC. 36, T.7N., R.2W., S.L.B. & M.

WEBER INDUSTRIAL PARK – PLAT D

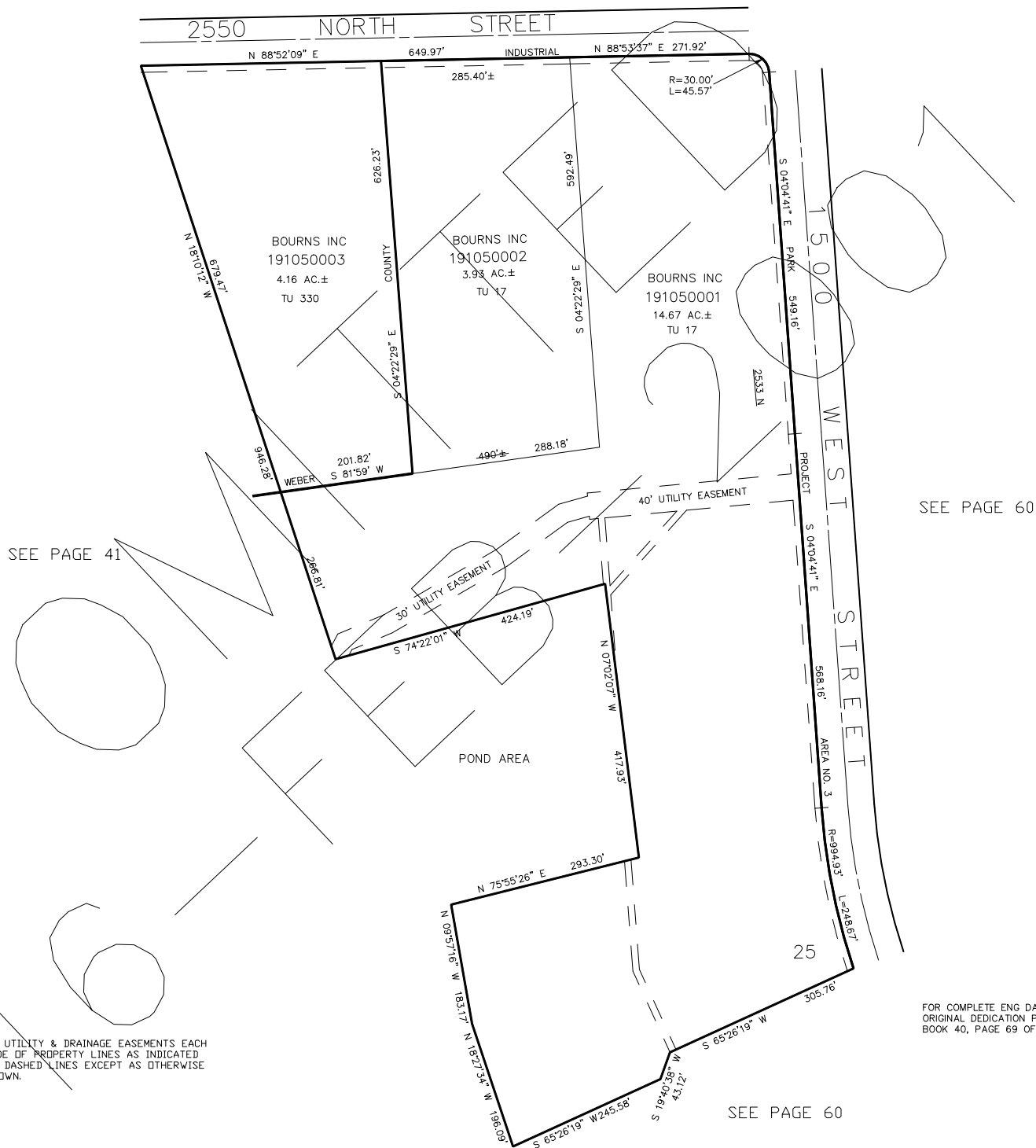
IN WEBER COUNTY

TAXING UNITS: 17, 330

SCALE 1" = 120'

SEE PAGE 41

SEE PAGE 59



10' UTILITY & DRAINAGE EASEMENTS EACH SIDE OF PROPERTY LINES AS INDICATED BY DASHED LINES EXCEPT AS OTHERWISE SHOWN.